



**DISTRIBUTED RESOURCE  
GENERATION  
Net Metered**

04-01-05  
**ER 4-200**  
PAGE 1 OF 3

**USE:** Requirements and guidelines for parallel interconnection of customer owned, static power converter type, (DR) Distributed Resource generation source, to Nipsco’s distribution system, and configured for “Net Metering.”

<b>PREVIOUS REVISION</b>	<b>ORIGINATED</b> 04-01-05	<b>PREVIOUS NUMBER</b>
--------------------------	-------------------------------	------------------------

**LATEST REVISION:** New Standard

**REFERENCE:** 170 IAC 4-4.2, IURC Rule for “Net Metering”  
 Rule 50 of Electric Tariff, “General Rules and Regulations Applicable to Electric Service”  
 IEEE 1547, latest revision  
 UL 1741, as revised 1/17/2001  
 Nipsco Standards ER 19-240 & ER 19-270

**SPECIFICATION:**

**1. ELIGIBILITY**

Any residential or K-12 school customer in good standing may install, own, and operate a “Net Metered” generation source(s), interconnected in parallel with Nipsco’s distribution system if the following are met (subject to current summer peak retail load limitation):

- 1.1 The generation source is of a solar, wind, or hydro type.
- 1.2 The total nameplate capacity of the generation source is 10 kilowatts (kW) or less (if multiple units are installed, the aggregate total nameplate shall be 10kW or less).
- 1.3 The generation source is located on the eligible customer’s premises, is operated by said customer, and is interconnected through a single service point.
- 1.4 The generation source is used primarily to offset all or part of the eligible customer’s own electric load.
- 1.5 Eligible customers shall enter into a “Net Metering Agreement” with Nipsco, before the generation source is allowed to interconnect to Nipsco’s distribution system.

**2. GENERAL**

- 2.1 All DR generation facility installations shall comply with any and all applicable codes and standards, including but not limited to those listed in the reference section of this standard.
- 2.2 Interconnection shall not be allowed to Nipsco’s distribution system until the installation has been approved by an authorized municipal, county, or other governmental inspector where such inspection procedures are established.
- 2.3 Generation source shall comply with UL 1741 (as revised on 1/17/2004).

# DISTRIBUTED RESOURCE GENERATION Net Metered



### 3. INSTALLATION AND OPERATION

- 3.1 The eligible customer shall provide proof of a qualified installation of the generation source, by a licensed electrical contractor.
- 3.2 The eligible customer shall install, operate, and maintain the generation source in accordance with the manufacturer's suggested practices.
- 3.3 A lockable manual disconnect switch shall be installed between the generation source, and Nipsco's distribution system, and be accessible to Nipsco personnel at all times. This switch shall be labeled as follows: (See Figure 1)

"Utility-Generator Disconnect Switch"

- 3.4 Nipsco may isolate the eligible customer's generation source at any time if it is believed that continued operation of the generation source will create or contribute to a system emergency. A system emergency is defined as any condition on the distribution system likely to result in any of the following:
  - 3.4.1 A significant disruption of service to any Nipsco customer.
  - 3.4.2 A substantial deviation from Nipsco's normal service standard.
  - 3.4.3 An endangerment to life or property.

- 3.5 Nipsco may perform on-site inspections to verify the proper installation and continued safe operation of the generation source, interconnection equipment, and net metering facilities. Inspections shall be done at reasonable times, and with reasonable advance notice to the eligible customer.

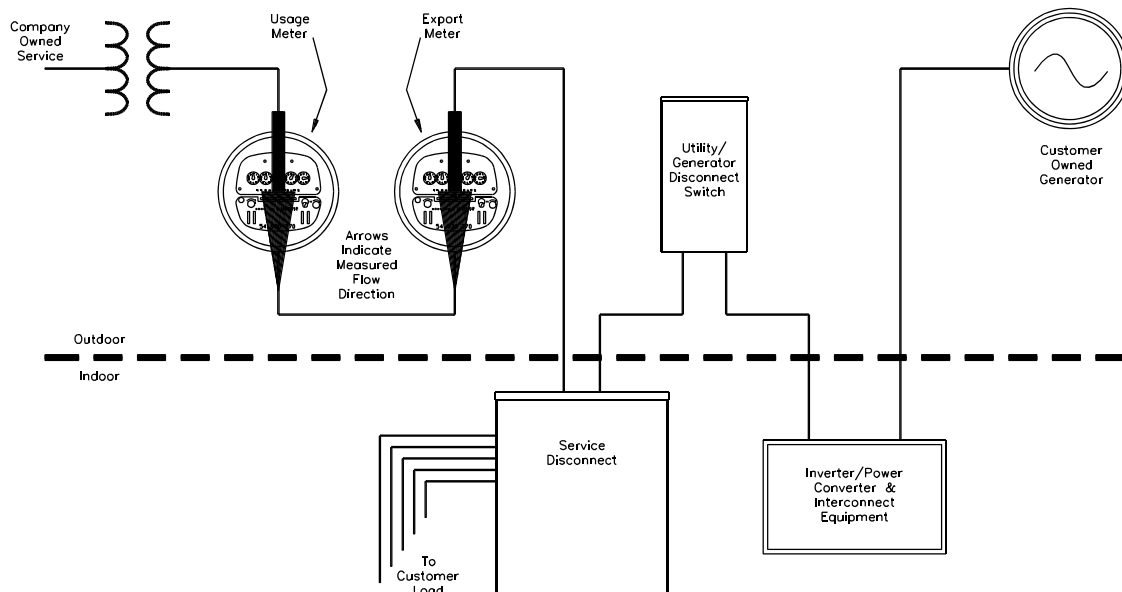


Figure 1



# DISTRIBUTED RESOURCE GENERATION Net Metered

## 4. METERING

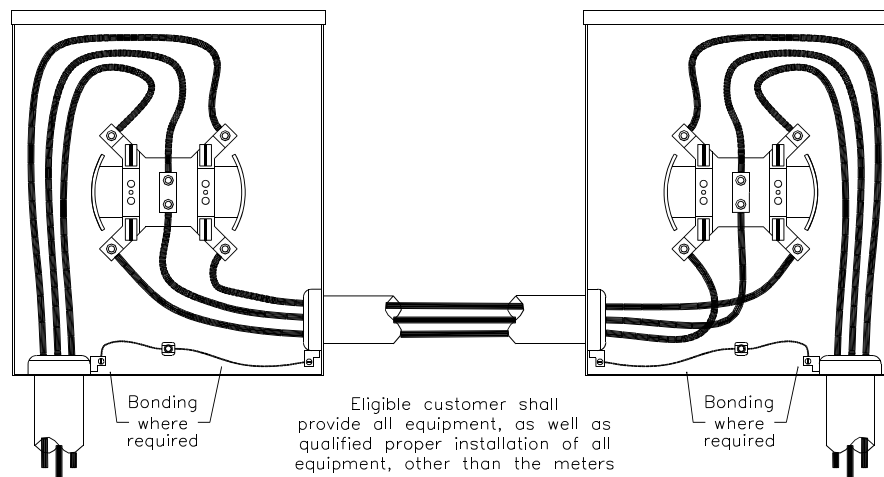
4.1 Metering of the Net Metered generation source shall be through two watt-hour meters. One watt-hour meter shall measure kWh used by the eligible customer, and one watt-hour meter shall measure the excess kWh exported by the customer to Nipsco's distribution system.

(See Figure 1)

4.2 Nipsco will provide both of the watt-hour meters, and the eligible customer shall provide both meter sockets, as well as provide for proper installation of all service entrance equipment required for a net metering interconnection. (See ER 19-240 & ER 19-270 for meter sockets approved for use on Nipsco's system)

4.3 The meter sockets shall be installed in the following manner, for proper Net Metering:

4.3.1 For eligible customers fed with an **Underground Service**.



4.3.2 For eligible customers fed with an **Overhead Service**.

